

Elmar Lightweight Stuffing Box

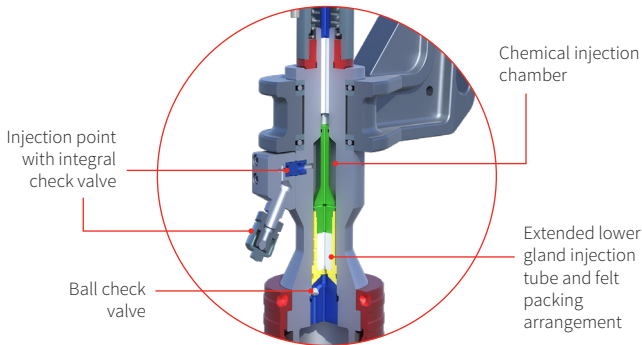
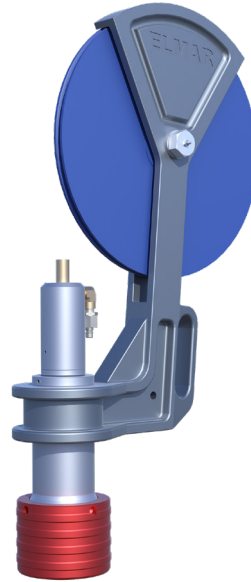
Mitigate the risk of hydrocarbon release during slickline well interventions. As the primary pressure control device, the Elmar™ lightweight stuffing box gives positive protection and allows intervention access to wells under pressure.

Our hydraulic slickline stuffing box is designed to pack-off all sizes of solid wireline up to 0.160 in., from 5,000- to 15,000-psi working pressures, with safety and convenience.

It is lightweight, compact and simple to operate. Positioned at the uppermost point of the pressure control equipment rig up, our slickline stuffing box incorporates a blow-out plug to automatically shut-in the well pressure in the event of packing failure, the slickline breaking or being stripped from the rope socket.

The slickline stuffing box consists of a chamber which contains packing with an external hydraulic packing nut assembly. The slickline passes through the packing which can be energized by the hydraulic packing nut to regain a seal when required. A 16-in. diameter sheave bracket assembly (or 20-in. diameter in case of 0.160-in. wire) and a male quick union assembly are supplied with the stuffing box as standard.

When operational demands require it, our stuffing box can be upgraded to include an integrated ball check valve assembly and chemical/lubrication injection port with felt packing. In addition a variety of packing compounds can be supplied to suit well conditions.



Stuffing box with optional chemical injection facility



Combined blow-out plug and ball check valve providing a built-in dual barrier safety system preventing uncontrolled well fluid loss

Features and benefits

- Full material traceability and 3rd party independent approval covering API 6A, and NACE (for H₂S)
- Lightweight for manual handling, simple operation with remote hydraulic actuation
- 16- and 20-in. sheave brackets with solid lightweight sheave wheels preventing finger entrapment
- Suitable for all line sizes up to 0.160 in.
- Line sized parts manufactured from aluminium bronze to ensure no wireline damage
- Packings engineered to suit specific line size, eliminating the need for well site reaming and reducing the chance of premature failures due to improper centralization
- Packings available to suit various well conditions, with selection critical for fluid compatibility and reduced friction of the slickline

Optional injection facility

- Injection point to increase sealing performance and life span of slickline stuffing box packing
- Allows fluid contact with the wireline to combat challenging well conditions
- Integral and replaceable check valve that eliminates well pressure return to the injection unit
- Replaceable manifold block that ensures integral check valve is fully protected

Options

Line sized kits to suit common slickline sizes
Combined blow-out plug and ball check valve for standard stuffing box
Stuffing box with injection facility
Test plug assembly for stuffing box
Stuffing box hand pump & hydraulic hose assemblies for 50- and 100-ft long
Chemical injection unit and hose
A variety of packing compounds

Weights and dimensions example

	Height	Weight
Stuffing box (E09)	31 in. (79 cm)	68 lb (31 kg)
Stuffing box (with optional injection facility)	33 in. (84 cm)	88 lb (40 kg)