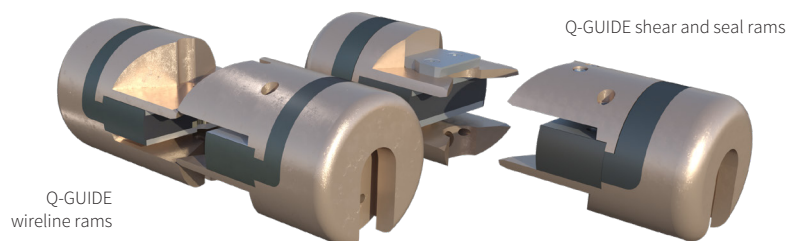


# Elmar Q-GUIDE Wireline Rams

The Elmar™ Q-GUIDE™ ram out performs all other wireline valve rams and helps reduce your operational costs by preventing damage to your wireline with our patented guiding features.

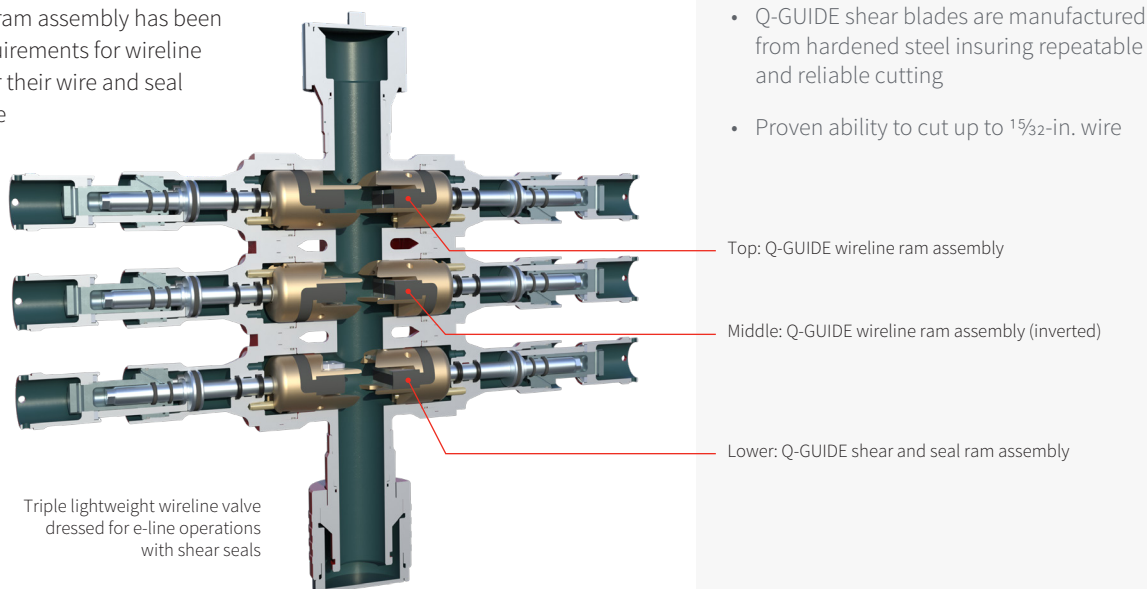


Designed to address the centralizing and trapping failures of historic designs, specifically relating to eccentric rig-ups and slack wire situations, the Q-GUIDE ram features four guiding surfaces arranged either side of the inner seal. With full-bore guiding, this ensures that under any condition the wireline is captured and placed into the inner seal without damage. Q-GUIDE rams accept standard Elmar inner and outer seals or our Constrictor™ multiline inner seal can be used for optimum performance.

You can make maximum use of your assets since the rams are easily inverted by moving the position of the guide rod, allowing the same wireline valve to be used for slickline or electric line operations.

### Shear Seal Rams

With the addition of a pair of hardened cutting blades, the Q-GUIDE shear and seal ram assembly has been developed to satisfy the requirements for wireline operators to be able to shear their wire and seal the well independently of the well control equipment used by the drilling or oil company.



### Features and benefits

- Patented design removes the chance of wireline damage when rams are actuated and closed, minimizing your operational costs
- Easily inverted by moving position of guide rod when changing between slickline and electric line for maximum use of your WPCE
- The ram bodies are manufactured from H<sub>2</sub>S resistant alloy steel allowing them to be used in a wide variety of well conditions
- All existing Elmar wireline valves in the field can accommodate the Q-GUIDE ram with quick interchange
- Uses the Elmar standard inner and outer seals, minimizing stock holding
- The Q-GUIDE is available for all sizes of wireline valves
- Q-GUIDE shear blades are manufactured from hardened steel insuring repeatable and reliable cutting
- Proven ability to cut up to 1½-in. wire

### Options

HNBR inner and outer seal supplied as standard, other elastomer types available

Rams dressed to suit specific wireline size or multiline capability