

Multi Machine Control



Smart automation for a safer, faster rig floor.

Heavy equipment, unpredictable weather, and exhausting conditions make the drill floor the most dangerous area on a rig. Pipe-handling demands hours of repetitive, high-risk activities. NOV's Multi Machine Control (MMC) automates these essential tasks so your crew can focus on what matters most: safe, efficient, and consistent operations.

Our automation system brings together every drill floor machine, orchestrating critical processes such as tripping, connections, and stand building. With a single operator in control, MMC reduces fatigue, minimizes human error, and delivers consistent performance.

Proven performance

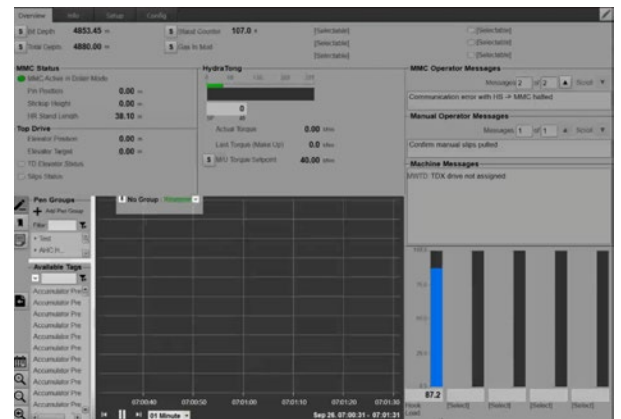
More than 30 rigs worldwide are using MMC to automate their drill floor operations. Customers have achieved a 33% increase in speed and reduced slip-to-slip times by 40 seconds, delivering considerable gains in efficiency and cost savings.

Stronger together

MMC's impact strengthens when integrated with our other leading drilling automation technologies. From NOVOS™ and Cyberbase™ rig control systems and ATOM RTX to Tally Master, Stickup Height Detector, and safety interlocks, these tools create a unified platform that enables safer workflows, smarter planning, and deeper insights for optimal rig performance.

Ready to modernize your rig floor?

Whether you're starting your automation journey or upgrading an existing system, MMC is your path to safer, faster, and more consistent performance.



Features and benefits

- **Intelligent automation**
MMC transforms manual tasks into smart, autonomous operations — redefining efficiency and safety on the rig floor.
- **Efficient pipe-handling**
Automates repetitive pipe-handling processes like drilling connections, tripping stands, and casing operations, and activities like doping, mud buckets, and ensuring consistent execution across crews.
- **Improved safety**
Keeps personnel out of the red zone and reduces operator fatigue by replacing manual sequences with a streamlined control system.
- **Single-point control**
One operator and one joystick, coordinating multiple machines at once for faster, more reliable operations.
- **Flexible operation**
Works in single or dual well centers, supporting a wide range of rig layouts and drilling programs.
- **Seamless integration**
Connects with other NOV automation technologies such as rig control systems, robotics, and red zone management solutions, as well as wired drill pipe to enhance performance.
- **Actionable insights**
Generates valuable operational data to support predictive maintenance, monitor wear, and optimize rig performance.
- **Proven reliability**
Built on a robust, state-based control system that adapts to real-time rig conditions and minimizes downtime from equipment interruptions

Tripping Out using MMC vs Manual

