

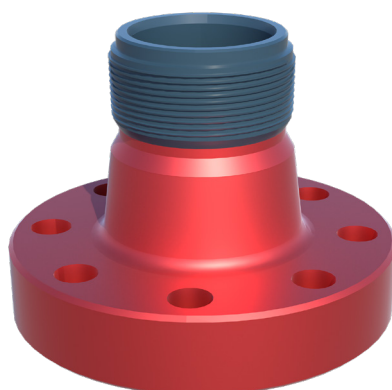
# Elmar Wellhead Adapter Flange

Maximize the usage of your WPCE assets with our wellhead adapter flanges. These allow you to safely connect your existing WPCE to multiple different wellheads. Our flanges are manufactured and certified to the same strict standards as all our WPCE, meaning you can guarantee the integrity of your complete rig-up.

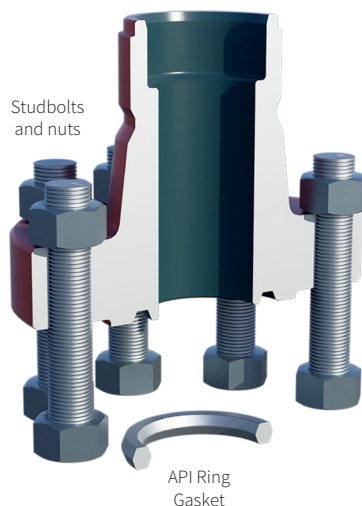
Our wellhead adapter flange consists of a quick union machined on a standard API 6A flange. The upper end can be supplied to suit any industry standard quick union, along with a blanking plug and collar if required.

These wellhead adapter flanges are available in various bore sizes and working pressures up to 20,000 psi.

We will design and manufacture wellhead adapter flanges for all API and Russian "GOST 28919" standard models. Our adapter flanges are fully traceable and certified to API 6A.

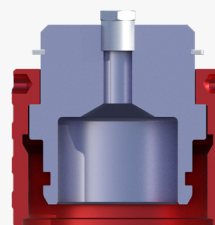


Typical Elmar wellhead adapter flange section



### Features and benefits

- Full material traceability and 3rd party independent approval covering API 6A and NACE (for H<sub>2</sub>S), guaranteeing the integrity of your complete rig up
- API monogrammed versions available if your operations need it
- API 20E monogrammed stud bolts and nut fasteners supplied as standard, keeping you compliant with the latest regulations
- Maximize the returns from your assets by using your existing pressure control equipment on different sized wellheads



Test plug and collar

### Options

Corrosion resistant coatings and weld overlays provide increased service life

Test plug and collar (night cap)

Conventional bolting

Segmented flanges for dual completion

Various bore sizes and working pressures up to 20,000 psi

Various material API ring gaskets